



# XM TORCH

**Depureco Industrial Vacuums USA**

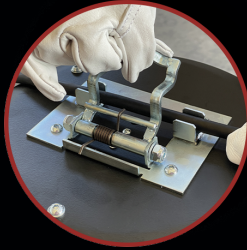
19121 Marketplace Avenue, Building 1, Suite 165  
Plum Creek Business Park • Kyle • TX 78640

[www.depurecousa.com](http://www.depurecousa.com)  
[info@depurecousa.com](mailto:info@depurecousa.com)

1.1 to 2.2 HP  
**POWER**

5500 in<sup>2</sup>  
**FILTER**

5 gal Bin  
**CAPACITY**



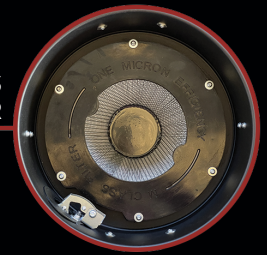
**WELDING DETECTOR FOR AUTOMATIC START AND STOP**



**JET CLEAN FILTER CLEANING SYSTEM**



**SPARK TRAP**



**M CLASS CARTRIDGE FILTER**



**AIRFLOW REGULATOR**



# SPEC SHEET

	Units	<b>XM TORCH 1M</b>	<b>XM TORCH 2M</b>
Code		A1452/US	A1450/US
Motors   Type		1x By-Pass	2x By-Pass
Power	HP	1.1   1~	2.2   1~
Voltage   Frequency	V Hz	120   60	120   60
Vacuum in continuous run	inH2O	98	98
Max Air flow	CFM	112	112
Flow regulator		Included	Included
Remote control		With ground cable	With ground cable
Inlet	Ø mm	50	50
Noise level	dB(A)	72	72
Bin capacity	gal	5	5
Dimensions	in	21.02 x 18.54	21.02 x 18.54
Height	in	39	39
Weight	lb	79	84
Primary filter		Cartridge	Cartridge
Surface	in <sup>2</sup>	5500	5500
(Class EN 60335-2-69)	IFA   BGIA	Class M	Class M
Media		PTFE Coated	PTFE Coated
Filter cleaning		Jet Clean	Jet Clean
Guillotine for Jet Clean		Included	Included
Anti-spark safety filter		Included	Included

## OPTIONAL FILTERS



**MAIN HEPA FILTER**  
H13



**ADDITIONAL HEPA FILTER**  
H14

## OPTIONAL

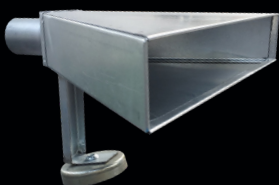


**GRD**  
Grounding

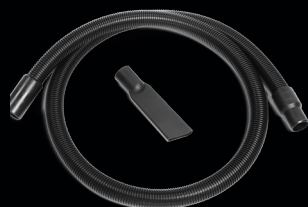


**BX**  
AISI304 Stainless steel bin

## ACCESSORIES



**Magnetic suction hood**



**Starter Kit**  
Ø 40 mm



**Dry Kit**  
Ø 40 mm